

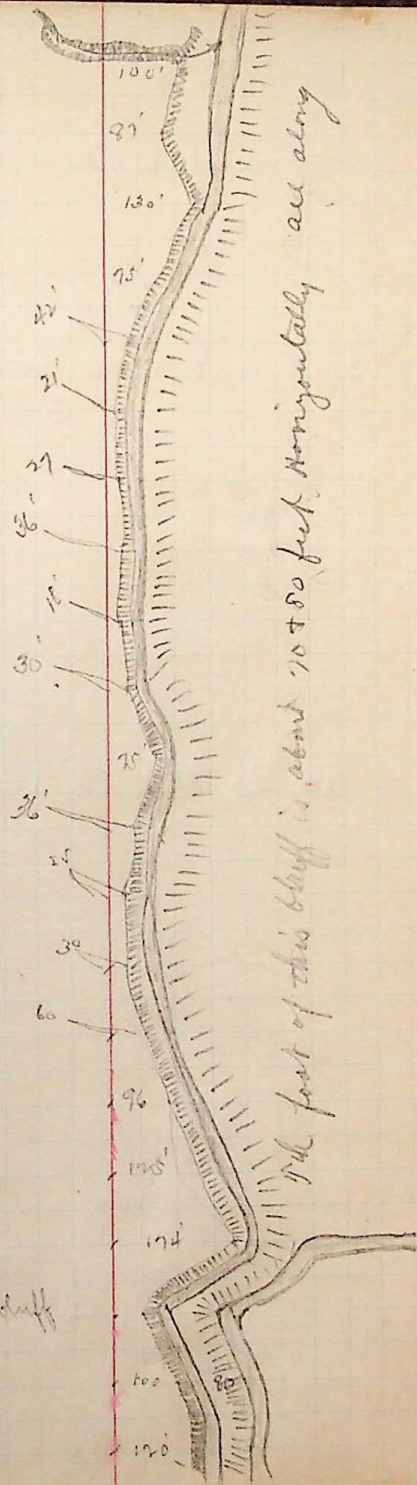
95
94
93
92
91
90
89
88
87
86
85
84
83
82
81
80
79
78
77
76
75

063°30' Re left / S 51° E

057°30' Re (left) / S 66 1/2° W

084°00' Re left (M) / S 17 1/2° W

draw track with



The part of this bluff is about 1000 feet horizontally all along

OR. produced 265' + exp bluff